

AVerMedia® AVerVision130

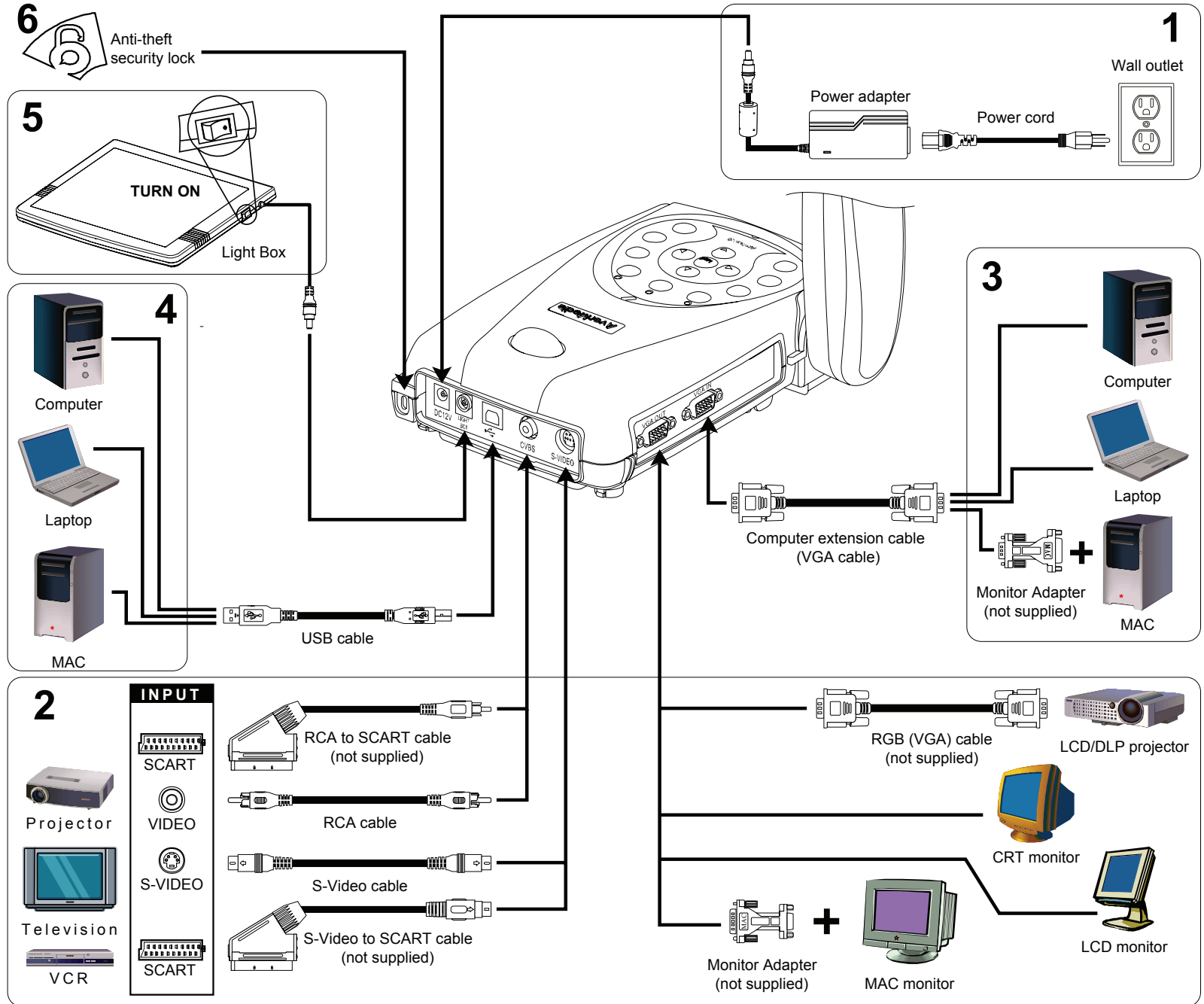
Quick Guide

Making the Connection :

1. Connect the power adapter and the LED on the front panel will turn green.
2. Connect the video output display. You may choose to output video from VGA OUT, S-Video, or CVBS port.
3. To display computer material, connect the VGA cable from the computer VGA OUT port to VGA IN port.
4. To use the AVerVision as USB camera or transfer file, connect the USB cable to the computer USB port.
5. Connect a light box (optional) to display x-ray, transparency.
6. Attach a Kensington compatible anti-theft device.

AVerMedia

Connection Diagram



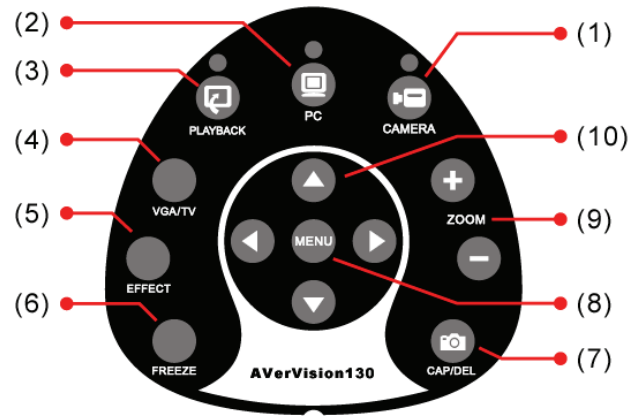
AVerMedia® AVerVision130

Quick Guide

Button Functions :

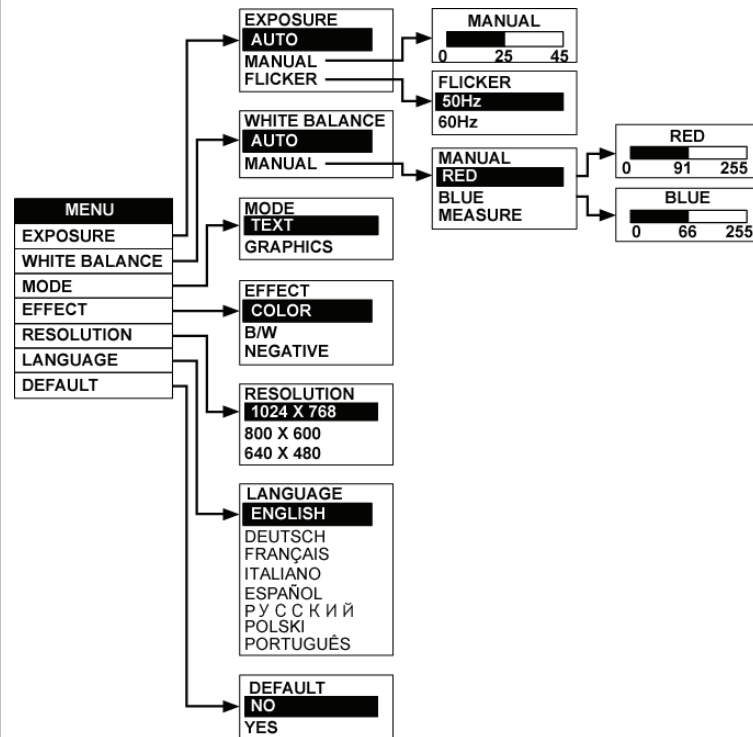
1. Display live video from the AVerVision130 document camera.
2. Display video signals from a computer.
3. Display previously captured images.
4. Switch between VGA (VGA Out) or TV (Composite Video/S-Video) output.
5. Convert the displayed video images to B&W, Negative or Color.
6. Freeze/unfreeze the displayed images.
7. Capture an image and temporarily save in dynamic storage or delete an image. AVerVision 130 saves up to 4 images only. When the fifth image is captured, the first image will be replaced automatically. When the AVerVision130's power is off, all the images will be removed from the dynamic storage.
8. MENU, refer to OSD tree.
9. Digitally zoom in and zoom out the picture up to 400%.
10. Use the up, down, left and right arrows to pan the zoom-in image or in MENU mode. Right arrow is also the "enter" button.

Touch Button Control Panel

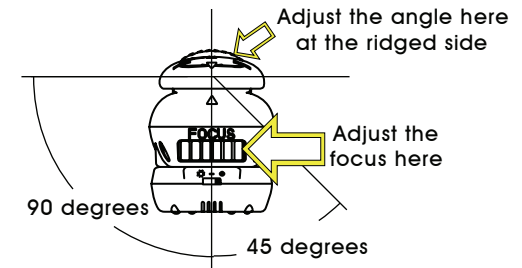


OSD Tree

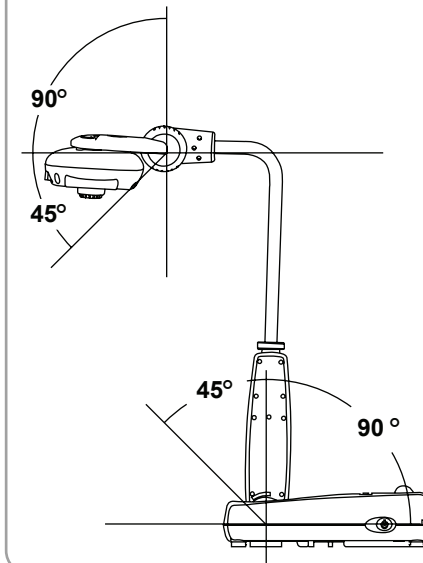
Press the **MENU** button to call up and exit from the main menu or sub-menu display. Then use **▲** or **▼** buttons to select the items in the menu list. Use **▶** button to enter sub-menu. To adjust the setting, press **◀** or **▶** buttons.



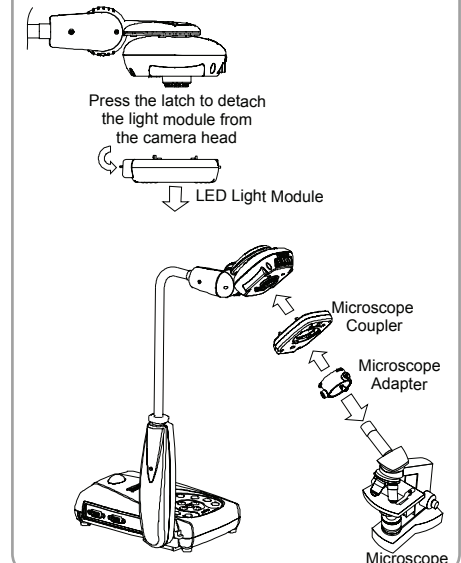
Adjust the Camera Head & Focus



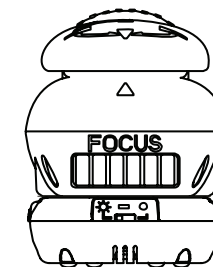
Gooseneck and Mechanical Arm



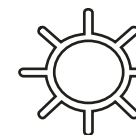
Connecting to a Microscope



Light Module



Turn On



Turn Off

